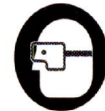


MODEL POWER CL-285



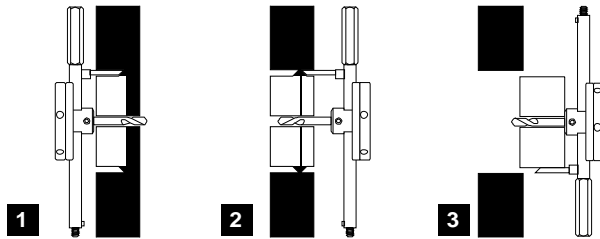
WARNING! ALWAYS read and follow the operating and safety instructions in the power tool manual and instructions for its use. ALWAYS wear safety goggles, gloves and other appropriate safety items for protection.

Capacity

1. For cutting round holes in ceilings, walls and floors.
2. Cutting Diameter: 1³/₁₆" - 1¹⁷/₁₆" (30~290mm)
3. Cutting Depth: 1/8" - 1" (3~25mm) from one side only
4. Cuts 20 gauge (1mm) aluminum, brass and sheet metal
5. Cuts veneer, plywood, gypsum-board, plaster, acrylic sheet, fiber cement board, etc.

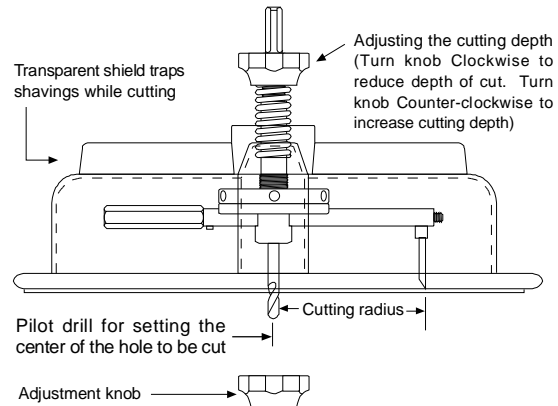
Cutting Thick Material

1. Cuts plywood, plasterboard, etc. up to 1" (25mm) thick.
2. To cut material 1" - 2" thick (25~50mm) use the "POWER CL-285" to first cut from one side of the material, and then start cutting from the other side until the cutting blade bores all the way through and makes a doughnut-shaped disc, as shown in Figures 1, 2, and 3.

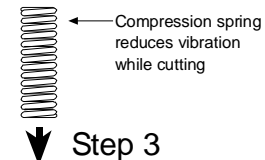


Relative operating speeds:

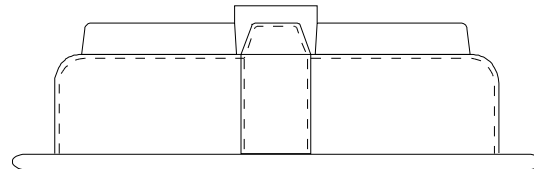
Hole Diameter	Power-Drill Speed
1 ¹ / ₈ " - 1 ⁷ / ₈ " (30~49mm)	800 r.p.m
2" - 2 ³ / ₄ " (50~69mm)	600 r.p.m
2 ³ / ₄ " - 3 ¹ / ₂ " (70~89mm)	400 r.p.m
3 ¹ / ₂ " - 4 ⁵ / ₈ " (90~119mm)	200 r.p.m
4 ⁵ / ₈ " - 11 ³ / ₈ " (120~290mm)	100 r.p.m



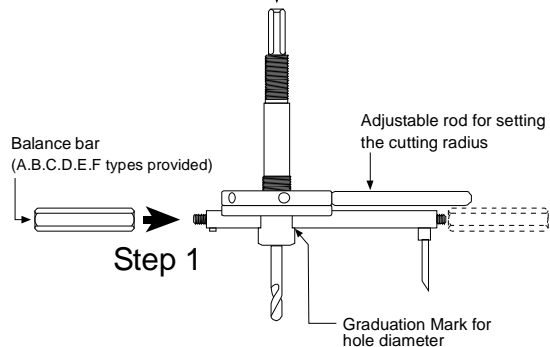
Step 4



Step 3



Step 2



Instructions for using Balance Bars

Cutting Radius ← Wrench

Balance Bar

Select the Correct Balance Bar

Hole Size	Bar
1 ³ / ₁₆ " to 2"	30~50mm F
2" to 2 ³ / ₄ "	50~70mm E
2 ³ / ₄ " to 3 ¹ / ₂ "	70~90mm D
3 ¹ / ₂ " to 4 ⁵ / ₁₆ "	90~110mm C
4 ⁵ / ₁₆ " to 5 ¹ / ₈ "	110~130mm B
5 ¹ / ₈ " to 5 ⁷ / ₈ "	130~150mm A

Cutting Radius ← Wrench

Balance Bar

Select the correct Balance Bar

Hole Size	Bar
5 ⁷ / ₈ " to 6 ¹¹ / ₁₆ "	150~170mm None
6 ¹¹ / ₁₆ " to 7 ¹ / ₂ "	170~190mm A
7 ¹ / ₂ " to 8 ¹ / ₄ "	190~210mm B
8 ¹ / ₄ " to 9 ¹ / ₁₆ "	210~230mm C
9 ¹ / ₁₆ " to 9 ⁷ / ₈ "	230~250mm D
9 ⁷ / ₈ " to 10 ⁵ / ₈ "	250~270mm E
10 ⁵ / ₈ " to 11 ³ / ₈ "	270~290mm F

CAUTION!

Be sure to check that all the hex-screws are tightly screwed in before you start cutting. Firmly secure the object you are cutting so it will not rotate. When cutting with a power-drill, keep its speed under 1000 R.P.M. Care must be taken to avoid cutting live wires.